



NAMIBIA DRYDOCK SHIP REPAIR (PTY) LTD

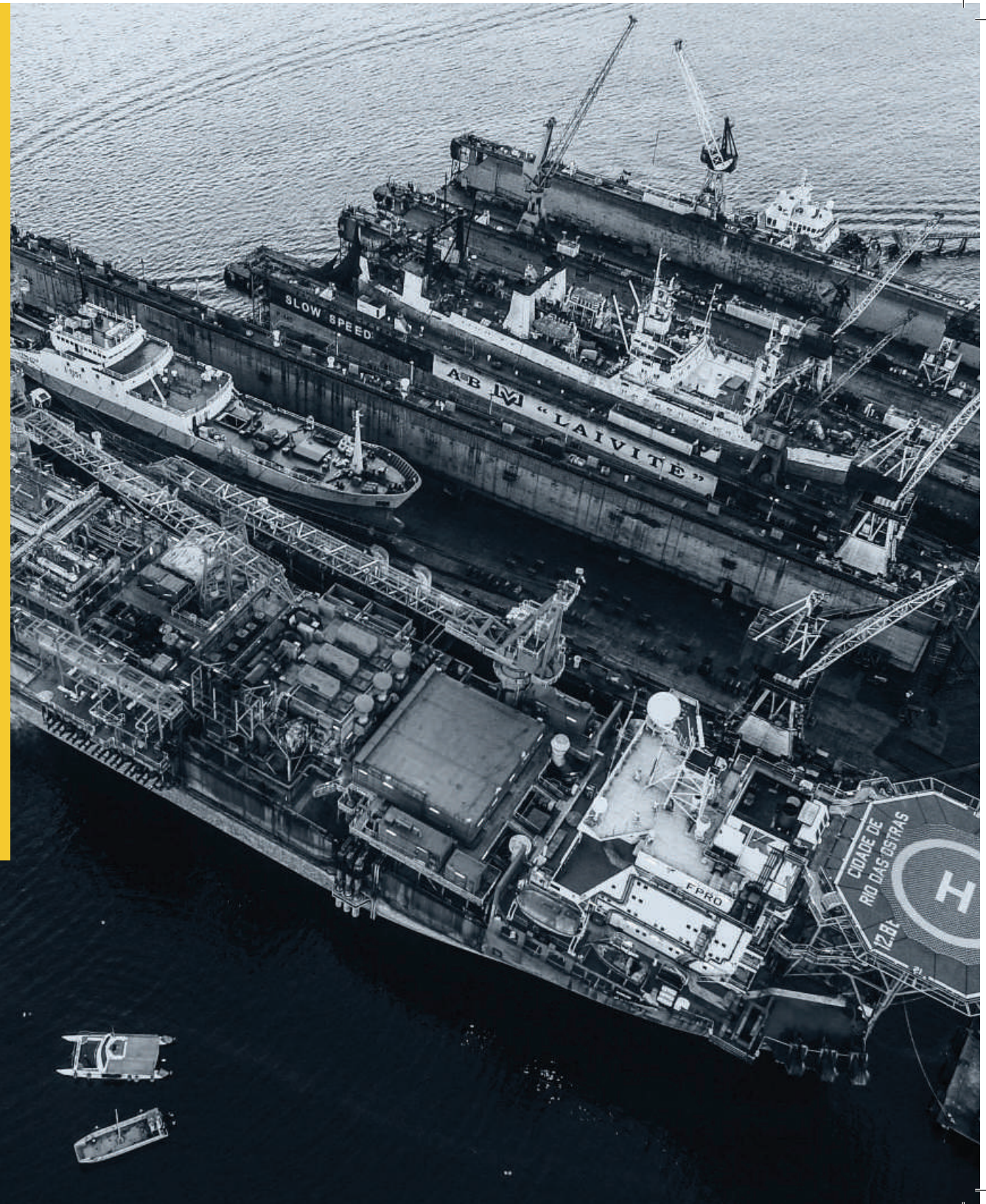
Delivering top class innovative
marine and industrial engineering
solutions to our business partners



WWW.NAMDOCK.COM

INDEX

WELCOME	1
HISTORY	2
COMPANY EVOLUTION	3
STRUCTURE	4
GOVERNING BODY	5
FACILITIES - OVERVIEW	6
DOCKS	7
WORKSHOPS	8
SERVICES / CAPABILITIES	9
SAFETY / QUALITY	10
ENVIRONMENT	11
NAMIBIA	12
CLIENTS	14
CONTRACTED SERVICES	15
OUR PEOPLE	16
SOCIO-ECONOMIC	17





WELCOME TO NAMDOCK

INNOVATIVE MARINE ENGINEERING SOLUTIONS

NAMDOCK is a world-class shipyard that operates along the West Coast of Africa, providing exceptional services, well-equipped engineering workshops, and extensive dry dock capabilities. Since its inception in 2006, NAMDOCK has proven to be a successful partnership between the Namibian government and the private sector.

NAMDOCK offers a range of services, including dry docking, ship repairs, maintenance, and engineering works. The company owns and operates three floating dry docks – NAMDOCK I, NAMDOCK II, and NAMDOCK III – with a combined lifting capacity of 30 000 tons. This makes NAMDOCK one of the largest and most advanced shipyards in Africa.

Our team of professionals have extensive experience in working with a wide range of vessels, from cargo ships and tankers to offshore support vessels and drilling rigs.

We are committed to providing superior services to our customers. Our efficient local supplier base, combined with our well-equipped workshops and expert workforce, allows us to provide cost-effective and timely services to vessels operating along the West Coast of Africa. Our location in Walvis Bay, Namibia, also provides easy access to major shipping routes, making us an ideal partner for vessels operating in the region.

HISTORY

2003 - 2005

16 June 2003 - Incorporated

June 2005 - MOU between Wesco Group & EBH Group SA

30 November 2005 - Name changed to Elgin Brown & Hamer Namibia (Pty) Ltd

2006 - 2007

January 2006 - Namdock 1 arrived

June 2006 - Namdock 1 operational & 1st oil rig repair

2008 - 2010

May 2008 - Namdock 2 arrives

August 2008 - Namdock 2 operational

2011 - 2014

2012 - DCD Group acquired shares from EBH Consortium

2013 - Namdock 3 arrived July & operational in October

2015 - PRESENT

2018 - EBH Consortium acquired shares from DCD Group

28 June 2019 - Name changed to Namibia Drydock and Ship Repair (Pty) Ltd



COMPANY EVOLUTION



Values:

Safety
Quality
Urgency
Integrity Communication
Knowledge

ELGIN BROWN & HAMER NAMIBIA | 2003 - 2013

Vision Your preferred world-class marine repair solution

Mission We are committed to contribute to the success of our customers through continuous development of our capacities, technical competencies and motivated workforce

Slogan Marine Repairs with Pride



Values:

One Team, One Goal
Customer Commitment
Leadership
Continuous Learning
Strive for Excellence

EBH NAMIBIA | 2013 - 2018

Vision Your preferred world-class marine repair solution on the West Coast of Africa

Mission We are committed to contribute to the success of our customers through continuous development of our capacities, technical competencies and motivated workforce

Slogan Marine Repairs with Pride



Values:

Kindness
Transparency
Trust
Respect
Integrity
Fairness

NAMIBIA DRYDOCK & SHIP REPAIR (PTY) LTD | 2019 – PRESENT

Vision To deliver top class innovative marine and industrial engineering solutions to our business partners.

Mission To render on-time exceptional and sustainable marine repair services to our customers operating in West Africa.

Slogan Preferred ship repair partner



SHAREHOLDING STRUCTURE



The Namibian Ports Authority ('NAMPORT') remains the key shareholder (52.5%) of Namdock since September 2005. Namport, is a state-owned enterprise, which was established by an Act of Parliament in 1994.



52.5%



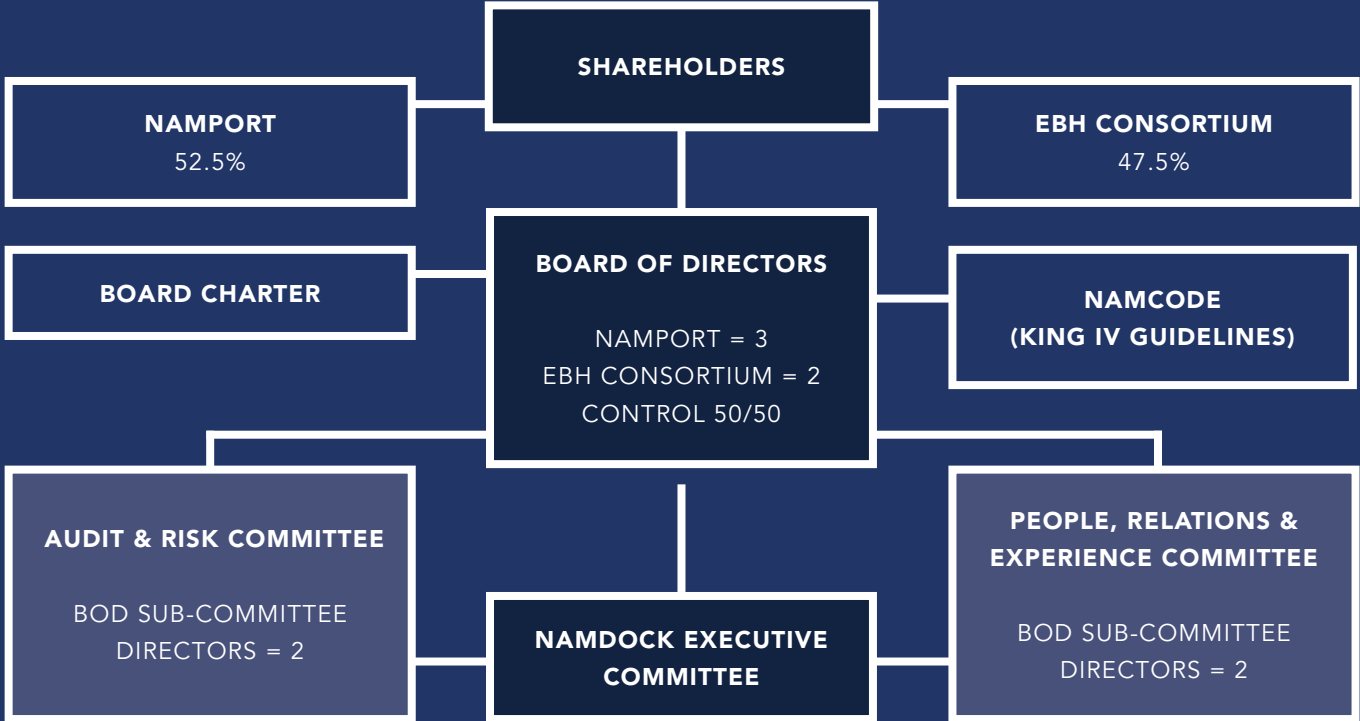
47.5%

EBH Consortium

EBH Consortium (EBHC) acquired 47.5% minority shareholding in Namdock from the DCD Group with effect from 2 April 2018 and is made up of various captains of industry possessing a framework built on a sound foundation of decades of knowledge and experience.

Namibian Shareholding

GOVERNING BODY



FACILITIES OVERVIEW

WORLD-CLASS FACILITIES AND WORKFORCE

We pride ourselves on being a comprehensive solution to our client, with three dry docks of different capacities, 15000Mt & 195m, 6500Mt & 139m, 8000Mt & 139m, as well as berthing capacity of up to 220m alongside Namdock III and 75m alongside Namdock I.

In addition to our dry docks, we have an array of workshops and repair facilities, and highly skilled professionals. Our fabrication, mechanical, electrical, carpentry, painting, and coating workshops allow us to provide a full range of services.

We are dedicated to getting every vessel back in top condition as rapidly and efficiently as possible. At all our facilities, we understand the importance of safety and quality. Our team is committed to providing reliable and high-quality services, with safety being a top priority.

NAMDOCK ensure that all work is carried out to the highest standards, with minimal downtime. Our team of experts work with our clients every step of the way to ensure complete customer satisfaction.



FACILITIES DOCKS

DIMENSIONS

Width at entrance

Width between inner walls

Length over keel blocks

Vessel draft maximum

Lifting capacity

Cranes

Thrust well / dock pit

Aft swim platform well

Alongside berthing

NAMDOCK 3

32,9m

33,5m

195m

8,5m

15,000Mt

2x 10T

10m X 6,4m X 4m

2,55m X 5,55m X 2,5m

Up to 220m

NAMDOCK 2

23,5m

25m

139,5m

7,2m

6,500Mt

2x 5T

None

None

No

NAMDOCK 1

23,5m

33,5m

195m

5,8m

8,000Mt

4T, 7T, 10T

8,5m X 8,2m X 2,4m

None

Up to 75m



NAMDOCK has a range of different workshops to support our ship repair and dry dock needs. Our fabrication workshop is located near the shipyard and offers 470m² under roof work area, is equipped with an overhead crane, CNC machinery, and various welding and heat treatment machines.

The mechanical and propulsion workshop, located less than 1km from the dock shipyard, provides a 1,480 m² under roof work area with three overhead cranes, and is equipped with numerous machines for repairs and maintenance, this facility is also used by Rolls Royce Namibia for their specialist repairs. The valve workshop provides approximately 240m² under roof workspace with an extended exterior workspace of 150 m² for repair and maintenance of several types of valves, and, also pressure tests tanks, pipes, kort nozzle, and rudders.

The electrical workshop, also located less than 1km from the dockyard, provides a 60 m² under roof work area for repairs and maintenance of electrical equipment, offering general electrical fault finding and repairs, new installations, motor and alternator overhauling and balancing, switchboard cleaning, insulation resistance testing, and other services. The blasting and coating department offers ultra high pressure blasting and cleaning, grit blasting, painting, anode surveys, maintenance of chain lockers and anchor chains, and hull and anode calculations.

Lastly, the carpentry team performs most of their work on-site, including flooring, ceilings, tiling, and installation of furnishings, but their workshop provides adequate space and machinery for all pre-fabrication and carpentry work.

Overall, the company provides comprehensive solutions for ship repair and dry dock needs with specialized workshops, expert personnel, and modern equipment.

Fabrication:	470m² - 20T crane
Mechanical:	650m² - 20T Condra & 20T Demag cranes
Propulsion:	833m² - 15T Kone crane
Pipe:	670m²
Valve:	240m²
Carpentry:	255m²
Electrical:	217²m - 10T Demag crane
Coatings:	2,740m² (including blast yard)

SERVICES / CAPABILITIES

VERSATILITY, EXPERTISE & FLEXIBILITY

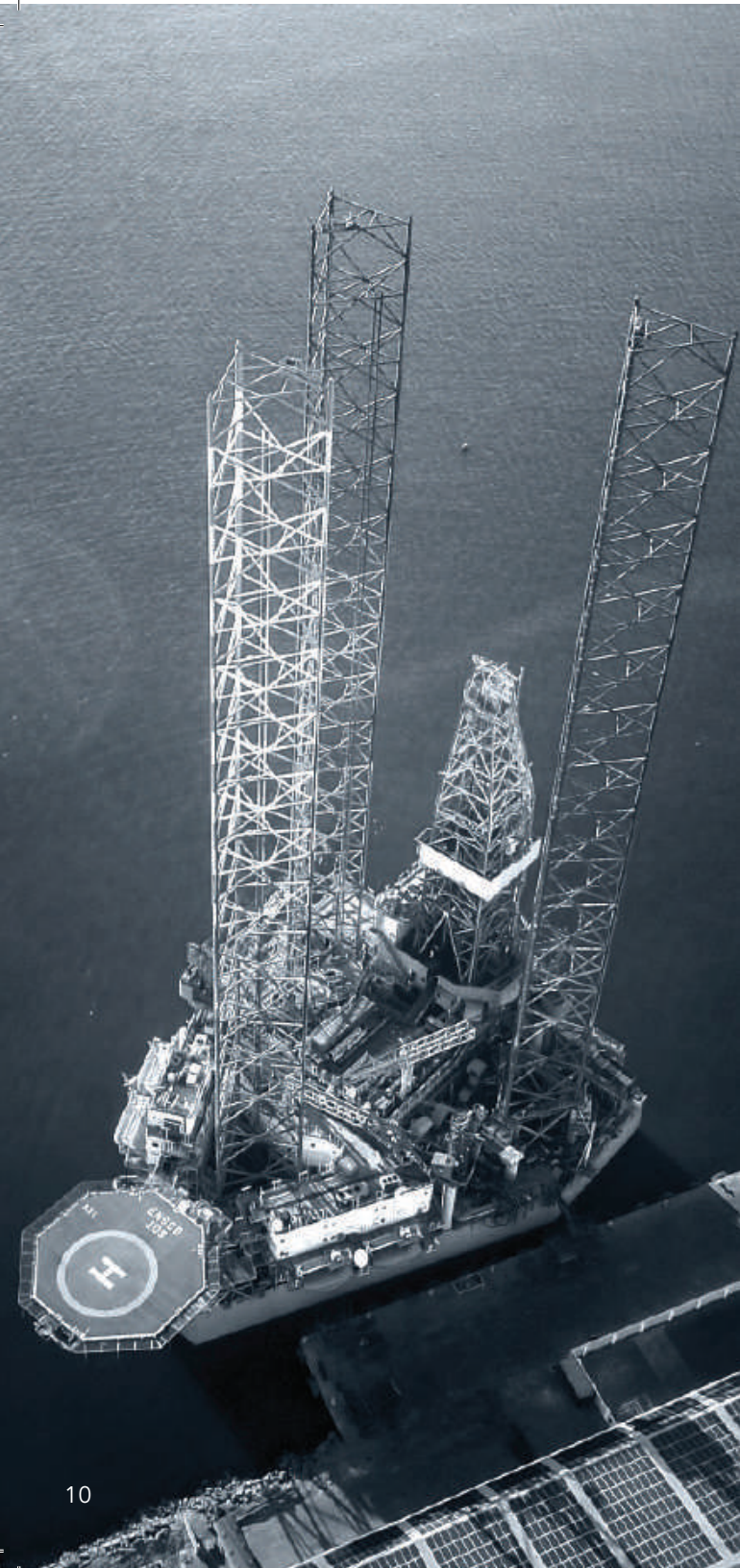
NAMDOCK offers a wide range of services to meet the needs of our customers. One of our key strengths is a strategic approach to our customers maintenance requirements, which includes predictive, corrective, and emergency maintenance on vessels. Our experienced team of technicians can quickly diagnose any issues and provide the necessary repairs or maintenance to get vessels back on the water without delays and rework.

In addition to maintenance, we also specialize in conversions, upgrades, and repairs. Whether it's installing new equipment, modifying a vessel's layout, or repairing damage, our skilled teams have the expertise and resources to get the job done efficiently and effectively. We understand the importance of meeting established deadlines and work closely with our customers to ensure their vessels are back in service as quickly as possible.

One of the things that sets us apart from our competitors is our flexibility and ability to provide customized solutions for our customers. Every vessel is unique, and we work closely with our customers to develop solutions tailored to their specific needs. This approach ensures that we provide the highest quality service possible while maintaining cost-effectiveness for our customers.

Finally, we are committed to optimizing our processes for obtaining spare parts and technical information. We understand the critical importance of having the right parts and information when working on vessels, and we have established systems to ensure that we can obtain everything we need as quickly as possible. Our commitment to efficiency and effectiveness ensures that our customers receive the highest quality service possible.





SAFETY / QUALITY

CERTIFICATION

NAMDOCK started the process of ISO compliance in early 2013, and received its first official certification in October 2014. Today, this has progressed and seen great development across all departments throughout the organisation.

Quality Management System



9004:2018



OHS 641727



Certificate nr 50596



The business's reputation is founded on its unwavering dedication to safety, as well as its value-adding, customer-centric approach. Our strengths lie within our team efforts and their commitment to collaborative teamwork.

NAMDOCK aims to build on these qualities and leverage its strategic partnership with its stakeholders to continuously enhance its knowledge-base and service capabilities. Apart from these strategic alliances, our focus on 'continuous improvement' through investing in research and development will also ensure that we maintain our competitive edge. Our commitment to professionalism and safety is certified by the standards we maintain across all areas of the shipyard. With customer service and ultimate satisfaction in mind, every aspect of the shipyard, from training to individual technical skills, quality control and safety is operated to meet the highest international standards.

ENVIRONMENTAL COMMITMENT

A GREEN FUTURE

At NAMDOCK, we take our environmental responsibilities seriously. This is why we are committed to compliance with all applicable environmental laws and regulations, and we continuously review and improve our environmental performance.

We have implemented and maintain an environmental management system that enables us to identify and mitigate our environmental impacts, and promote sustainable practices. Through efficient operations, we minimize our waste generation and reduce our energy and water consumption, while promoting the 3Rs (Reduce, Reuse, Recycle) to minimize the amount of waste we generate.

Through the use of environmentally friendly products and materials that have a lower environmental impact, we can work together with our suppliers and customers to reduce the environmental footprint of our operations.

Additionally, we ensure that our operations and services do not have a negative impact on the environment by preventing pollution. We educate our employees, contractors, and customers about our environmental commitment and their roles in supporting sustainable practices. We continuously review our environmental objectives and targets and measure our progress against them to ensure we are making progress towards our goals.



NAMIBIA - THE BEST OF AFRICA

AN ATTRACTIVE DESTINATION

Namibia is a southern African country, that has emerged as one of the most stable and prosperous nations on the continent. With a vibrant economy and a stable political climate, Namibia is a perfect destination for both travellers and businesses alike.

In recent years, Namibia's economy has grown rapidly, driven by a booming tourism industry, mining and agriculture. The country is home to a wealth of natural resources, including diamonds, uranium, copper, and gold, making it an attractive destination for international investors. The government has been proactive in implementing business-friendly policies that promote economic growth, and this has resulted in an increase in foreign investment and business opportunities.

For travellers, Namibia offers a unique and unforgettable experience. The country is known for its stunning landscapes, wildlife, and diverse cultures. Tourists can explore the vast Namib Desert, where you will find some of the world's tallest sand dunes, or visit the world-renowned Etosha National Park, which is home to a diverse array of wildlife, including lions, elephants, and rhinos. The country's rich cultural heritage is also on display, with a mix of indigenous African and European influences.

Namibia truly offers the best of both worlds and is a must-visit destination for anyone looking to experience the best of Africa, in a safe and enriching environment.

TYPES OF VISAS

Business visa - A business visa is required for visits to Namibia for corporate meetings, seminars, conferences, or training courses. This visa does not allow employment and is issued for a single entry of up to 90 days per year, although shorter periods are common.

Visa-exempt applicants can apply at the port of entry, while those from non-exempt countries must apply in their home country. All foreign nationals require a work visa for short-term employment in Namibia, which is valid for 90 days.

We require the following to arrange for a short term work visa:

- Copy of applicants passport
- Copy of applicants qualifications (Diploma or Certifications)
- Motivation letter from employer confirming employment and cost responsibility as well as reason for assignment in Namibia
- Letter of invitation from Company recruiting the services
- Visa Application to be completed and signed by applicant

Please note that the processing time for VISAS is determined by the Ministry of Home Affairs.

Tourist/holiday visa - A tourist visa is for those visiting Namibia for tourism purposes only. Visa-exempt passport holders can get a 90-day tourist visa at the port of entry, while non-exempt passport holders must obtain a tourist visa before leaving their country. If there is no Namibian representation in their country of residence, they can contact an immigration agent in Namibia to obtain a 'letter of approval,' which will be endorsed at the port of entry. Tourist visas for passport holders from visa-restricted countries are valid for 30 to 90 days.



CLIENTS

A FEW OF OUR ESTEEMED CLIENTELE





SMART PARTNERSHIPS / CONTRACTED SERVICES



LOCAL SUBCONTRACTED SERVICES

At NAMDOCK we understand that smart partnerships and contracted services are essential for efficiently providing high-quality services to our customers.

Forming and maintaining long term relationships with our partners, is an important part of our daily operation and such partnerships are a win-win situation for all parties involved; from the local business community, to our partners and customers.

Some of the services offered locally are:

- Engine Refurbishment
- Gearbox repairs
- Turbo Chargers
- Re-building
- Fuel Injection Systems
- Propeller repairs
- Hydraulic Piping and Controls
- Hydraulic Pumps and Motors
- Automation System
- Marine Electronics
- Navigation Systems
- Communication Systems
- Dynamic Positioning Systems
- Hydrocarbon Tank Cleaning
- Non Destructive Examinations
- Calibration Services
- Vibration Analysis
- Infrared imaging
- Load testing
- Rope Access Services
- Flooring
- Truck Rentals
- Cranes and fork trucks
- Upholstery
- Life-raft services
- Safety equipment services
- Waste Management
- Waste Oil Recycling
- MARPOL Management
- Diving & Bathy Survey
- Steel Wire Spooling Services
- Scrap Recycling
- Catering Services
- Classification Societies

OUR PEOPLE

THE HEART OF OUR OPERATIONS

NAMDOCK is a people focused company with the emphasis on our employees quality of 'work-life' experience. NAMDOCK employs more that 700 employees and believes in developing and growing a diverse workforce of technical professionals.

To achieve sustainable success, an organization and its workforce require a healthy relationship based on mutual trust, respect, and open communication. Embracing diversity and recognizing the value of individual differences can lead to increased productivity and innovative solutions.

All employees benefit from lifelong learning and continuous development through various skill transfer and further education programs, these programs can take the form of in-house programs or international training and skill development programs.



SOCIO-ECONOMIC DEVELOPMENT

SOCIO-ECONOMIC DEVELOPMENT

NAMDOCK has played a significant role in contributing to the socio-economic development of the local community through various programs, initiatives, and projects.

NAMDOCK's operations have been a catalyst for the creation of new businesses and job opportunities, with over 92 companies on the vendor listing that are directly dependent on NAMDOCK's operations. This demonstrates NAMDOCK's continued commitment to social responsibility and sustainable development, making a positive impact on the lives of individuals and the broader community of Walvis Bay and Namibia at large.



CONTACT
US

WWW.NAMDOCK.COM

TEL: +264 64 218 6000

CNR 2ND STR EAST & HANNA MUPETAMI ROAD.
WALVIS BAY, NAMIBIA

